



UNITED KINGDOM
PROPERTY
AWARDS
WINNER 2021-2022

2022
Best of Houzz
Choice

2022
Best of Houzz
Service

2022
Best of Houzz
Winner



Video Tour



Flats 1&3, 10 Lyndhurst Gardens, London

Guide Price £7,500,000



Lyndhurst Gardens

This Grade II Listed award-winning home in Belsize Village is “laterally” amazing and rarer than blue moons. You won’t be able to wait to turn your key as you arrive home to this stunning turn-key 5/6 double-bedroom property.

The home has approximately 2,000 sqft on each floor, has exclusive use of one of Belsize Park’s most prominent South facing gardens, and was designed superbly by NW3 Interiors. It includes a private spa with a sauna and steam shower, an outdoor jacuzzi and pool, and an award-winning gym.

The name Belsize comes from the old French “Bel Assis,” meaning beautifully situated and nowhere is more beautifully situated than Lyndhurst Gardens, a one-minute walk to Belsize Village, where the only chains are on bicycles. The offering of schools is the finest in London, with The Hall, Trevor Roberts, St Christopher’s, Devonshire House, Sarum Hall and UCS all close by. The property is a 12-minute walk to Hampstead Heath and is well connected to three tube lines, giving excellent access across London.





Drawing Room

27' 3" x 18' 6" (8.31m x 5.64m)

If you're wondering where the meters are in this home, they're in the reception. 3.6-meter ceilings, to be exact, with a beautiful design that puts the cor in cornice. The reception received such a grand reception at the United Kingdom Property Awards that it won the "Residential Interior Apartment London" category.

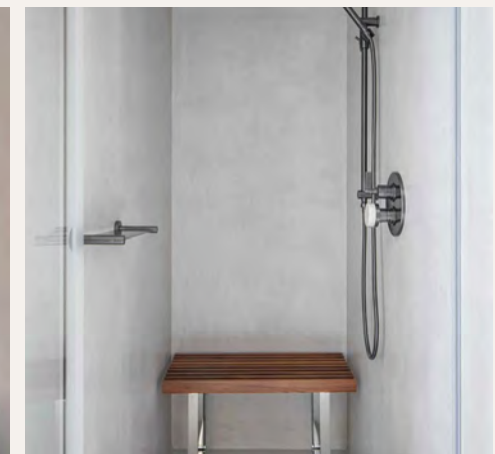
The well appointed drawing room with generous proportions features large bay windows looking out over beautiful Hampstead foliage, match-and-weave mosaic floors, and has plenty of space to accommodate formal guest dining and relaxed seating around the fireplace. With soothing tonal colours and beautiful, ornate detailing across the walls, ceiling and architraves, the design strikes the ideal balance between old and new.





Spa

While areas to meet and work are an important part of the modern family home, just as vital is the need for spaces to relax, rest and restore. The wellness spa includes a coal and infra red sauna, steam shower, a gorgeous freestanding bath and beautiful wooden shelving, creating a warm and soothing ambience. Whether taking time for yourself in this quiet corner of your home or unwinding after your daily swimming and gym routine, this luxurious space was designed for your wellbeing.









K I R E



Garden Lounge

22' 2" x 14' 7" (6.76m x 4.45m)

The relaxed family living space effortlessly blends the outside with the inside. With extensive glazing on two sides, the room can be opened up to meet the patio and garden beyond. But when privacy is needed, sheer floaty curtains provide an intimate escape from the world outside. The handmade wallpaper is an embroidered bespoke design featuring trees and birds, pulling the garden into the room. The large, comfortable white sofa offers a dreamy place to curl up and relax.

The sliding door opens directly onto the Edwardian tiled outdoor lounge area, which alongside the high-spec Bang & Olufsen stereo, makes the space perfect for entertaining guests seamlessly between the inside and the outside lounge, garden and jacuzzi/pool.





Garden

100' 8" x 65' 3" (30.68m x 19.89m)

This expansive garden in Belsize Park is a dream come true for those looking to entertain in style. This beautiful South-facing oasis features a lush, green lawn perfect for outdoor activities ranging from football to sunbathing. After dark, the flood light provides plenty of illumination to continue the fun long into the night.

For those looking to relax, the outdoor lounge area offers a peaceful space to enjoy the tranquil atmosphere. A pool with swimming jet and jacuzzi provides an ideal spot to unwind, while the spacious terrace area makes it easy to host unforgettable parties with friends and family. The garden enjoys access to a stunning double-shower bathroom and WC, purpose-built for the outside space for family and guests to use. With uplifting pops of yellow, it's a bolder colour than elsewhere in the home, but the bright tones complement the garden beyond. The walls are also heated – a dream for drying towels and keeping things nice and cosy. As well as the patio door, the shower room is also accessed by a sleek, secret doorway from the dining room next door.



Kitchen/Dining Room

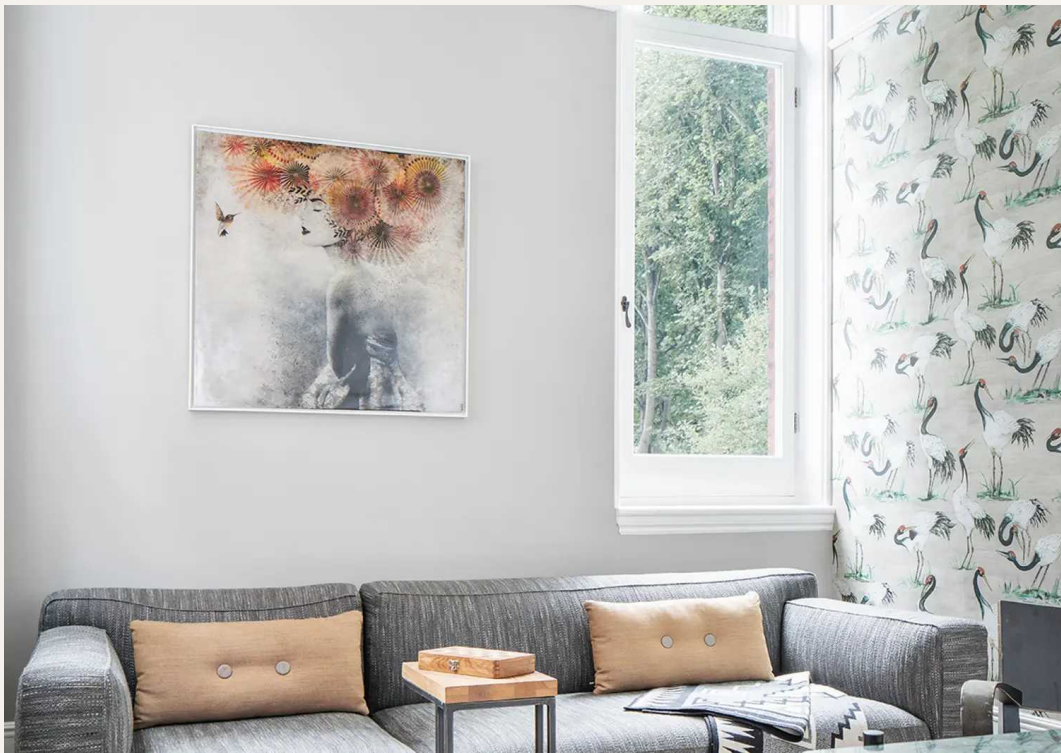
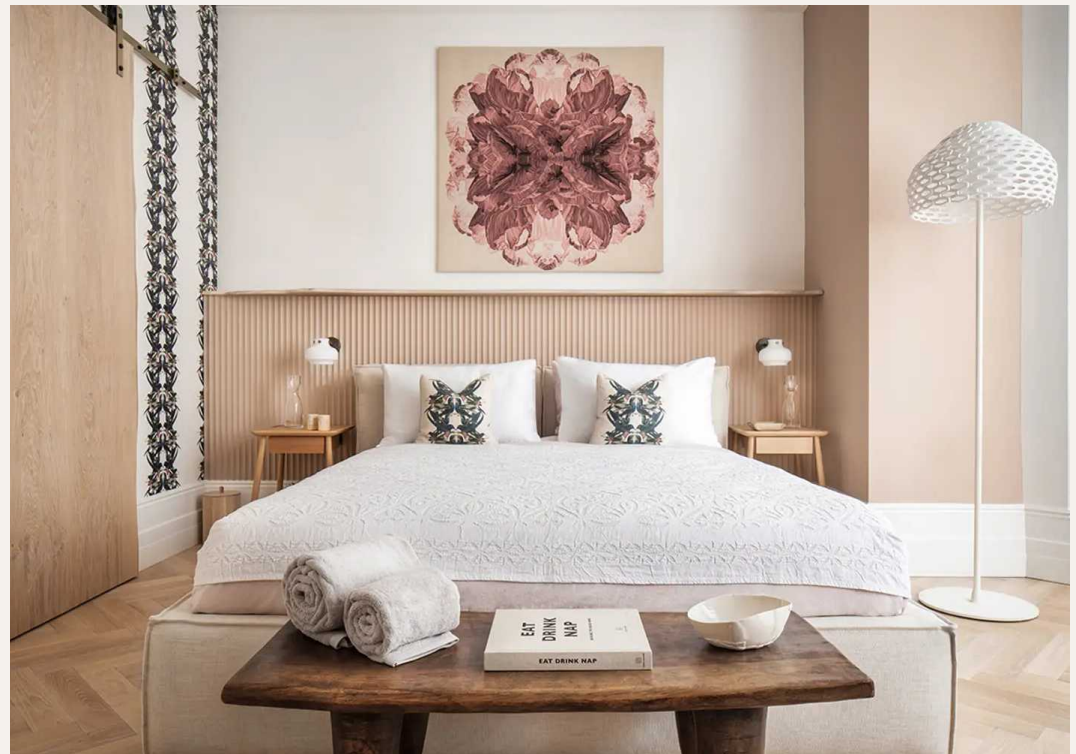
33' 2" x 17' 9" (10.11m x 5.41m)

The kitchen and dining room provides an open-plan living space for the family, at the heart of the property and the room ties together the wonderful views of the garden with the living spaces.



When it comes to the furniture, the mix of mid-century, modern and clean silhouettes, along with real wood elements, complement the energy of this family home. The kitchen includes Gaggenau appliances, dish drawers, marble countertops, and two separate dining tables.





2022
Best of Houzz
Design

2022
Best of Houzz
Service

2022
Best of Houzz
Winner

K I R E

Urban Style Home Gym
17' 4" x 14' 1" (5.28m x 4.29m)

The home gym is back with a punch. And this award-winning Gym is London's answer to Tyson Fury. With ample space to swing a club this stunning gym won best Gym in the UK (Houzz). Having the body you want for the pool will be easy with this stunning fitness studio.

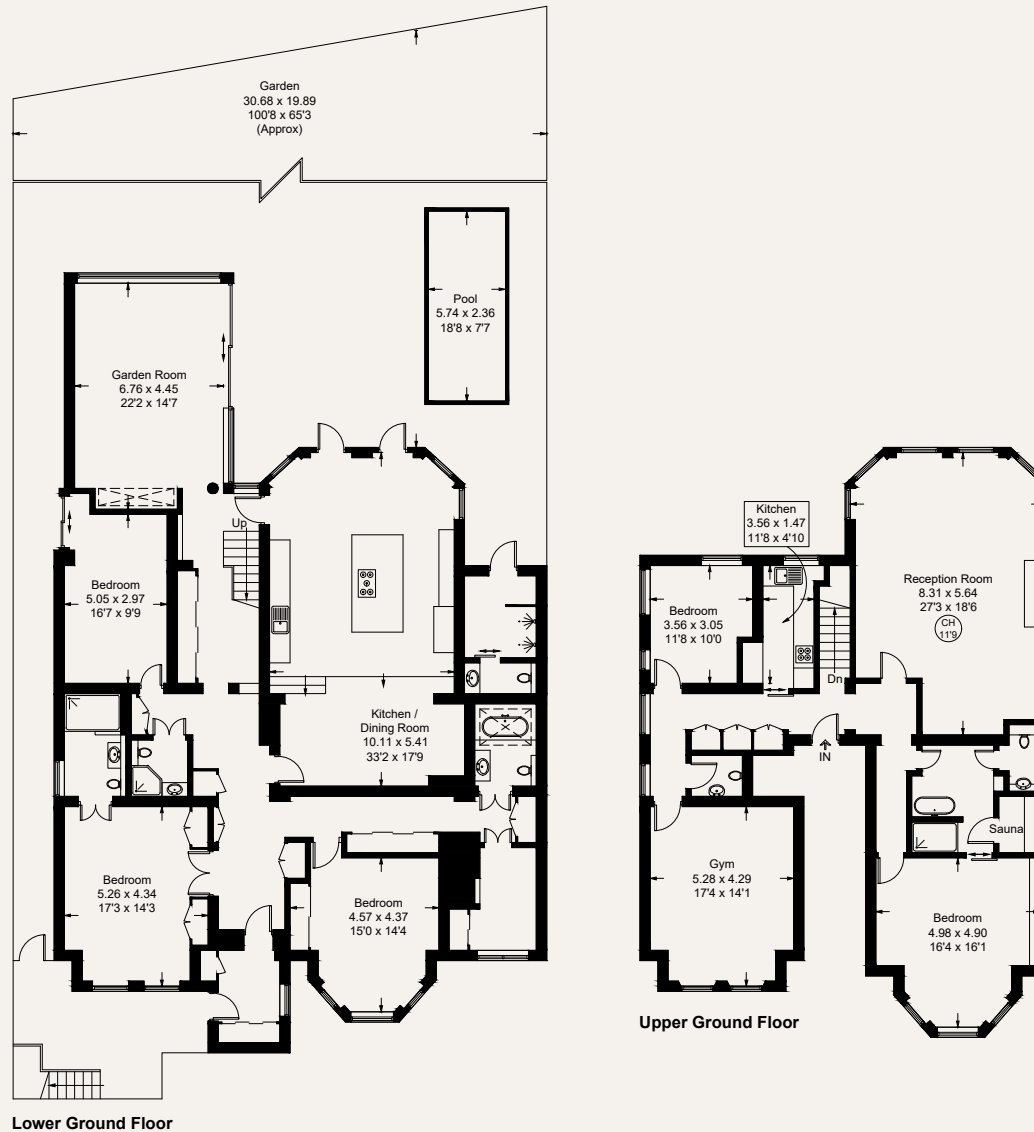




Lyndhurst Gardens, NW3



Total = 371.5 sq m / 3999 sq ft



Measured in accordance with RICS Code of Measuring Practice. To be used for identification and guidance purposes only.
Whilst every care is taken in the preparation of this plan, please check all dimensions, shapes and compass bearings before making any decisions reliant upon them.
www.london58.com © 2023 hello@london58.com



K I R E
KEEPING IT REAL ESTATE

**Penthouse, Akenside Court,
26 Belsize Crescent - NW3 5QT**

+44 20 8064 2160

info@kire.life

www.kire.life

